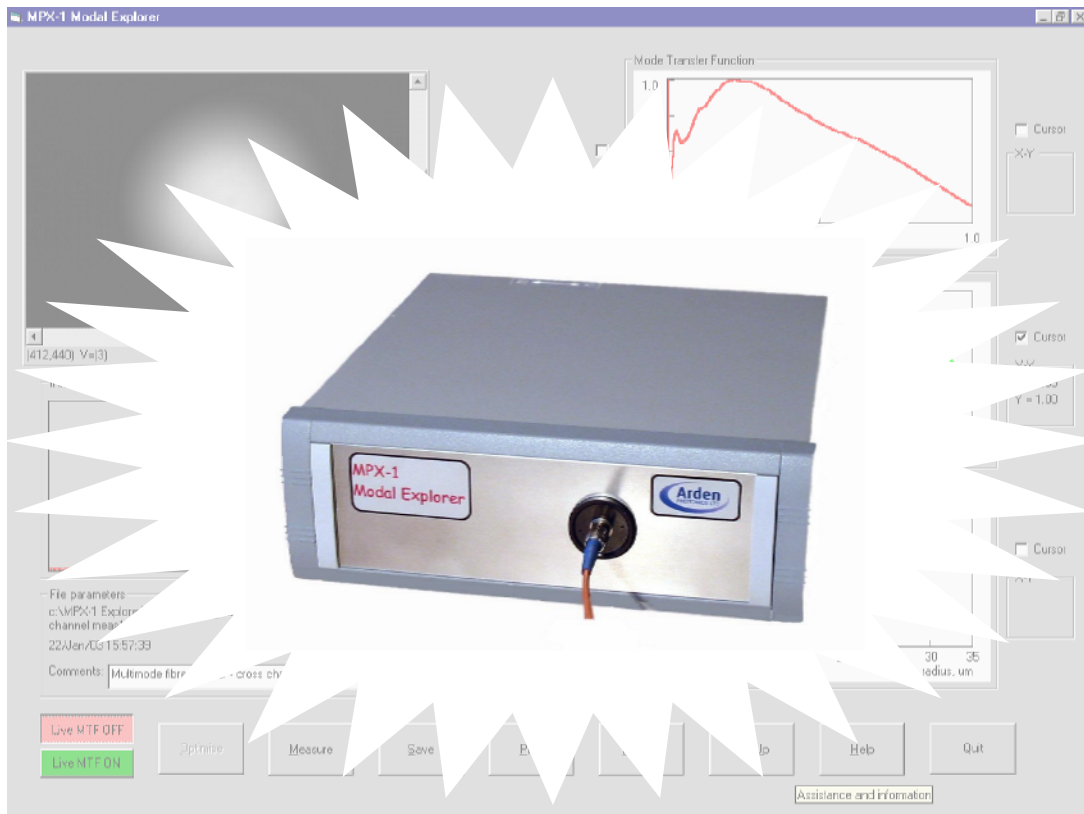
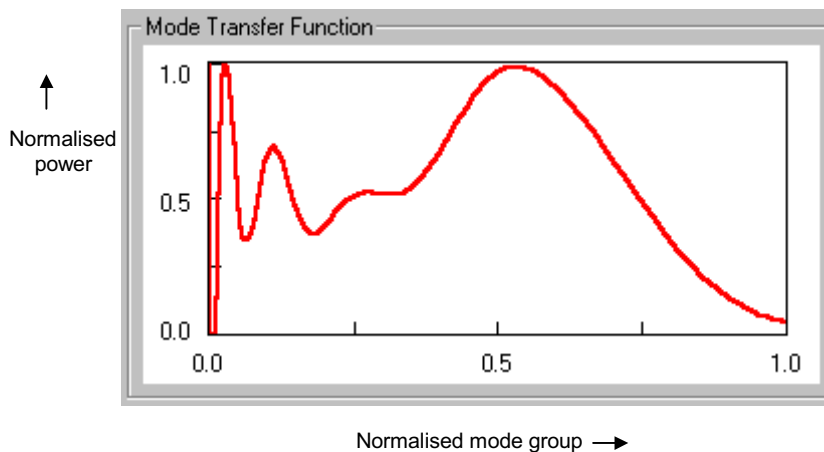


# The MPX-1 Modal Explorer

Be sure of the mode distribution in your patchcords, OTDRs and light sources ....



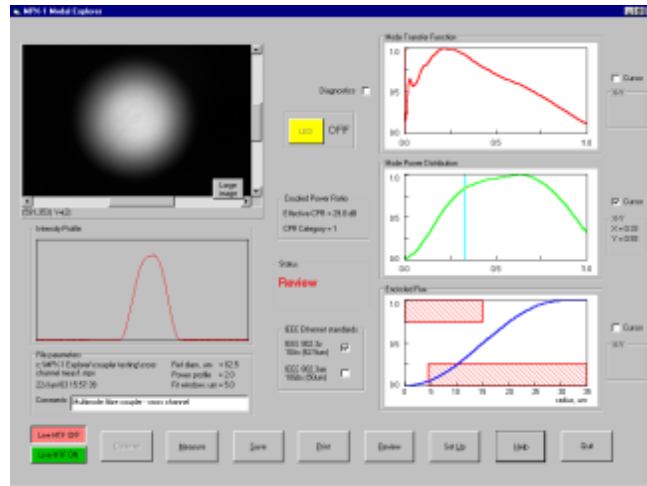
The MPX-1 Modal Explorer provides *real-time* measurement of mode-filling in multimode optical fibers.



Example of mode distribution of OTDR source.

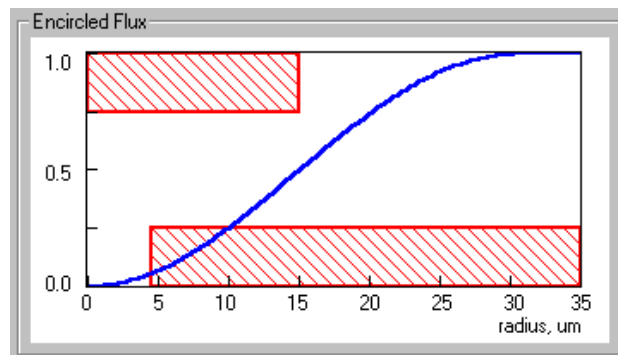
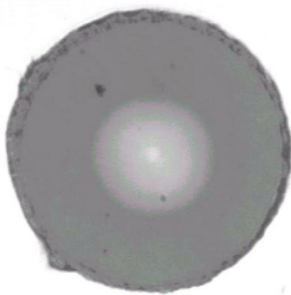
**Simply connect your patchcord and the MPX-1 Modal Explorer will measure:**

- Real-time Mode Transfer Function
- Mode Power Distribution
- Effective Coupled Power ratio (CPR)
- Encircled Flux



**Applications include:**

- Source and patchcord characterization for IEC11801 LAN testing
- Component transfer function measurements
- VCSEL characterisation for Gigabit Ethernet IEEE 802.3
- Mode-scrambler and mode-filter characterization
- Connector inspection



IEEE Ethernet standards

IEEE 802.3z  
1Gbs (62.5um)

IEEE 802.3ae  
10Gbs (50um)

Coupled Power Ratio

Effective CPR = 28.1 dB

CPR Category = 1

**Technical details:**

Size(cm): 25W x 27D x 9H  
 Weight: 2.5kg  
 Controller: Windows PC.  
 MPX-1 control software  
 and framegrabber.  
 Monitor.  
 Keyboard.  
 Mouse.  
 Cables.  
 Connectors: 2x 26 way D type.  
 RS 232C.  
 FC/PC (ST, SC options).

**Contact information:**

Arden Photonics Ltd  
 37 Chantry Heath Crescent  
 Knowle  
 Solihull  
 West Midlands.  
 B93 9NJ. UK  
 +44 (0)1564 205043  
[sales@ardenphotonics.com](mailto:sales@ardenphotonics.com)  
[www.ardenphotonics.com](http://www.ardenphotonics.com)

This specification may be changed without notice due to technical advances or component changes. (02/03)