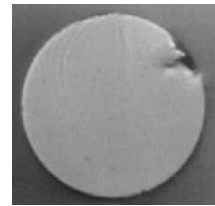
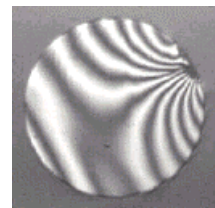


# The **VF-20**



When fiber end quality really matters . . .

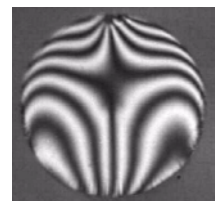


The VF-20 will check the surface quality and flatness of your cleaved, polished or lensed fiber end at the flick of a switch.

- Non-contact – no damage to the fiber under test
- Inspection and interferometric modes
- Easy to use – load fibers using kinematic fiber holder
- Measure perpendicular and angled fiber ends

Example of 8 degree cleave in optional angled fiber holder.

Other angled holders available.



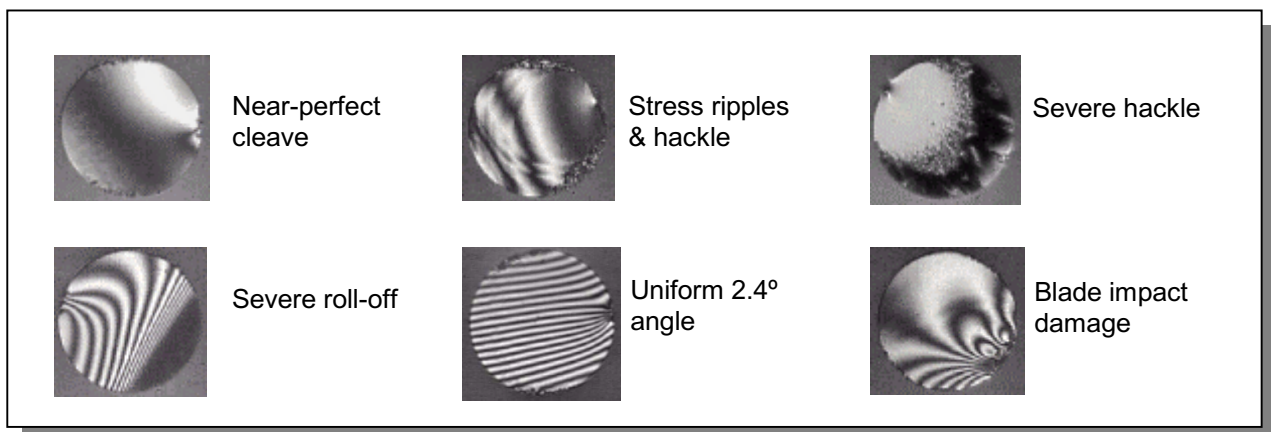
The VF-20 is an interferometric inspection system specifically designed for checking the quality of optical fiber ends. Based on the Michelson interferometer it has the following advantages over other systems:

- A long, 5mm, working distance to eliminate the risk of damaging the fiber end
- Large image size optimized for displaying fibers, not connectors.

Applications include:

- Cleaver manufacture or maintenance
- Component manufacture
- Fiber R&D – holey fiber, MEMs devices, etc.

Some typical interference patterns for fiber cleaves are shown below:



#### Technical details:

Size(cm): 24W x 24D x 9H  
Weight: 2.0kg  
Display: 9 inch black & white monitor  
Connectors: BNC video, 2.1mm power socket  
Power supply: 12v in-line power supply  
Options: USB image digitizer  
VF-H8 angled fiber holder

#### Contact information:

Arden Photonics Ltd  
37 Chantry Heath Crescent  
Knowle  
Solihull  
West Midlands.  
B93 9NJ. UK  
+44 (0)1564 205043  
sales@ardenphotonics.com  
www.ardenphotonics.com

This specification may be changed without notice due to technical advances or component changes. (12/02)

Verify your fiber with... **The VF-20** 